



RECP #: 752679

RECORDED 5/8/2019 AT 1:11 PM BK# 2620 PG# 1721
Debra K. Lee, CLERK OF LARAMIE COUNTY, WY PAGE 1 OF 1

STATE OF WYOMING CORNER RECORD

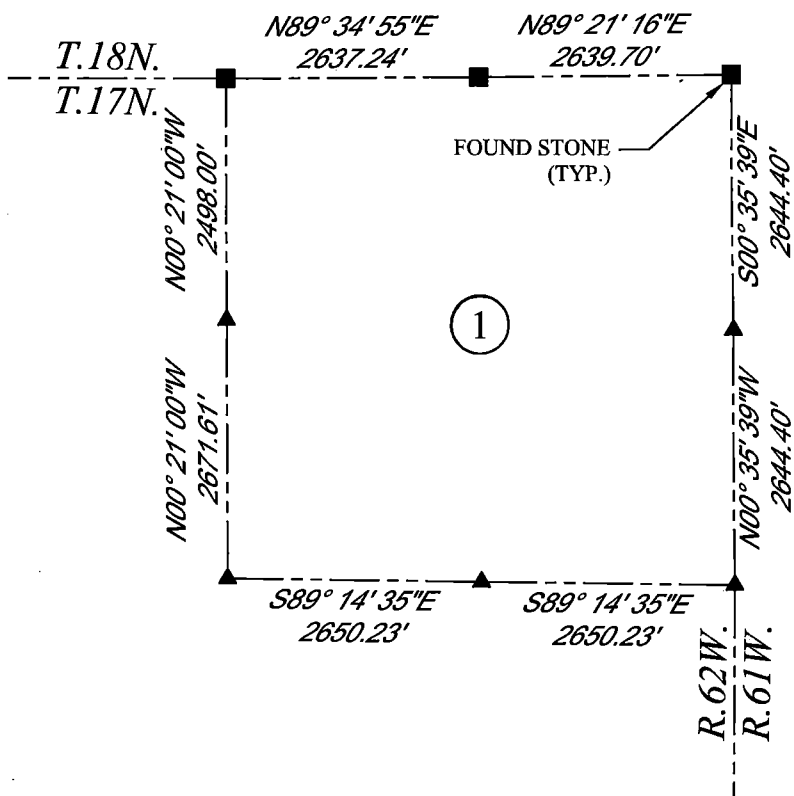
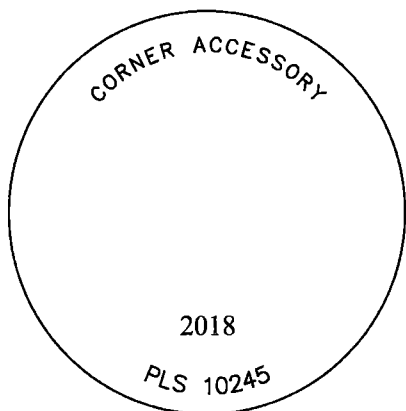
(In compliance with the CORNER PERPETUATION AND FILING ACT, Wyoming Statutes, 1997 Section 33-29-140, et. seq., and the Rules and Regulations of the Board of Registrations for Professional Engineers and Professional Land Surveyors)

NORTHEAST CORNER SECTION 1, T. 17 N., R. 62 W., 6TH P.M., LARAMIE COUNTY, WYOMING

GLO: SET A LIMESTONE 20X18X8. 15" DEEP WITH 6 NOTCHES ON EACH OF THE 4 EDGES AND SET TO THE CORRDINAL POINT AND RAISED A MOUND OF STONE AROUND IT FOR COR. TO SEC. 17 AND 18 NORTH, RANGE 61 AND 62 WEST.
FOUND: FIRM SET SANDSTONE APPROX. 14X15X4, WITH 5 NOTCHES ON N & S FACES, AND 2 NOTCHES ON E & W FACES, STONE WAS 0.1' ABOVE SURFACE WITH ANOTHER STONE FIRMLY SET ON S. SIDE.
SET: 3.25" ALUMINUM CAP ON #5 REBAR, 2" ABOVE SURFACE, MARKED AS SHOWN, SET ON SOUTH SIDE OF FOUND FIRM SET LIMESTONE WITH MARKINGS, CORNER IS DIRECTLY UNDER N & S FENCE LINE.



SCALE: NONE
NORTH DETERMINED BY
G.P.S OBSERVATIONS



LEGEND:

- FOUND BLM CAP
- FOUND USFS CAP
- FOUND STONE
- FOUND PRIVATE MONUMENT
- ◆ CALCULATED POSITION
- ▲ SET MONUMENT (LS10245)
- SECTION LINE

DATE OF FIELD WORK: 10/02/2018 OFFICE REFERENCE: MERIDEN

CROSS INDEX DIAGRAM

| | | | | | | | | | | | | | | | | | | | | | | | | | |
|---|----|---|----|---|----|---|----|---|----|----|----|----|----|----|----|----|----|----|----|----|----|----|----|----|--|
| 1 | 2 | 3 | 4 | 5 | 6 | 7 | 8 | 9 | 10 | 11 | 12 | 13 | 14 | 15 | 16 | 17 | 18 | 19 | 20 | 21 | 22 | 23 | 24 | 25 | |
| A | | | | | | | | | | | | | | | | | | | | | | | | | |
| B | | | | | | | | | | | | | | | | | | | | | | | | | |
| C | 6 | | 5 | | 4 | | 3 | | 2 | | 1 | | | | | | | | | | | | | | |
| D | | | | | | | | | | | | | | | | | | | | | | | | | |
| E | | | | | | | | | | | | | | | | | | | | | | | | | |
| F | | | | | | | | | | | | | | | | | | | | | | | | | |
| G | 7 | | 8 | | 9 | | 10 | | 11 | | 12 | | | | | | | | | | | | | | |
| H | | | | | | | | | | | | | | | | | | | | | | | | | |
| J | | | | | | | | | | | | | | | | | | | | | | | | | |
| K | | | | | | | | | | | | | | | | | | | | | | | | | |
| L | 18 | | 17 | | 16 | | 15 | | 14 | | 13 | | | | | | | | | | | | | | |
| M | | | | | | | | | | | | | | | | | | | | | | | | | |
| N | | | | | | | | | | | | | | | | | | | | | | | | | |
| O | | | | | | | | | | | | | | | | | | | | | | | | | |
| P | 19 | | 20 | | 21 | | 22 | | 23 | | 24 | | | | | | | | | | | | | | |
| Q | | | | | | | | | | | | | | | | | | | | | | | | | |
| R | | | | | | | | | | | | | | | | | | | | | | | | | |
| S | | | | | | | | | | | | | | | | | | | | | | | | | |
| T | 30 | | 29 | | 28 | | 27 | | 26 | | 25 | | | | | | | | | | | | | | |
| U | | | | | | | | | | | | | | | | | | | | | | | | | |
| V | | | | | | | | | | | | | | | | | | | | | | | | | |
| W | | | | | | | | | | | | | | | | | | | | | | | | | |
| X | 31 | | 32 | | 33 | | 34 | | 35 | | 36 | | | | | | | | | | | | | | |
| Y | | | | | | | | | | | | | | | | | | | | | | | | | |
| Z | | | | | | | | | | | | | | | | | | | | | | | | | |

WOOD
2615 AVIATION DRIVE
SHERIDAN, WY 82801
PH: 307-675-6400



THIS CORNER RECORD WAS
PREPARED BY ME OR UNDER
MY DIRECTION AND
SUPERVISION,
SEAL AND SIGNATURE

